

# REVISION

A	JB	M Rodriguez
9/12/2014	ECN-235969	
RELEASE FOR PRODUCTION		

## NOTES:

- 80 POSITIONS, PACKAGING ON -03 NOT AVAILABLE AS STANDARD.
- ⊕ REPRESENTS A CRITICAL DIMENSION.
- MAXIMUM BURR ALLOWANCE: .0015[0.038]
- MINIMUM PUSHOUT FORCE: 6 OZ
- MAXIMUM HEIGHT VARIATION BETWEEN ANY TWO POSTS: .002[0.05]
- MAXIMUM ALLOWABLE BOW: .002[0.05] INCH/INCH AFTER ASSEMBLY.
- AVAILABLE ON -01 & -02 ONLY.
- AVAILABLE ON -03 ONLY.
- AVAILABLE ON -02 & -03 ONLY.
- SEE TABLE 1 FOR PACKAGING.

TABLE 1	
-XX	PACKAGING
-01	TRAY
-02	TRAY
-03	TAPE & REEL

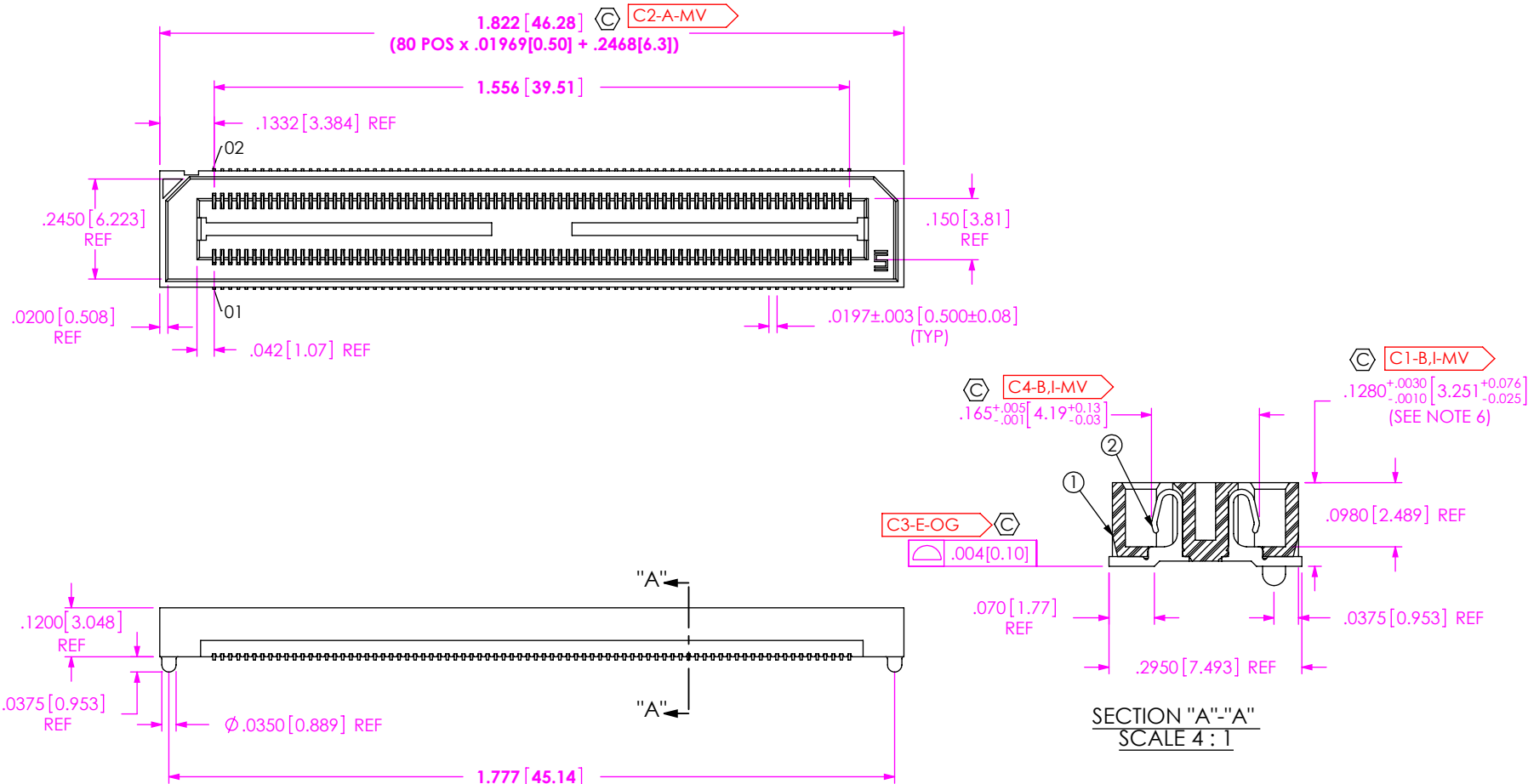


FIG 1  
REF-178708-01 SHOWN

BY SIGNING THIS DOCUMENT YOU ARE ACCEPTING THE CONDITIONS SET WITHIN. YOUR REQUIREMENTS MUST BE LISTED WITHIN THIS DRAWING. WHERE NO DIRECTION FROM THE CUSTOMER IS IDENTIFIED SAMTEC'S PROCESS REQUIREMENTS WILL BE USED.

DATE: \_\_\_\_\_  
 COMPANY: \_\_\_\_\_  
 CUSTOMER SIGNATURE: \_\_\_\_\_  
 PRINTED NAME: \_\_\_\_\_  
 PHONE NO: \_\_\_\_\_  
 EXCEPTIONS: \_\_\_\_\_

UNLESS OTHERWISE SPECIFIED, DIMENSIONS ARE IN INCHES. TOLERANCES ARE:

DECIMALS	ANGLES
.XX: ±.01 [.3]	2°
.XXX: ±.005 [.13]	
.XXXX: ±.0020 [.051]	

PROPRIETARY NOTE  
 THIS DOCUMENT CONTAINS INFORMATION CONFIDENTIAL AND PROPRIETARY TO SAMTEC, INC. AND SHALL NOT BE REPRODUCED OR TRANSFERRED TO OTHER DOCUMENTS OR DISCLOSED TO OTHERS OR USED FOR ANY PURPOSE OTHER THAN THAT WHICH IT WAS OBTAINED WITHOUT THE EXPRESSED WRITTEN CONSENT OF SAMTEC, INC.



520 PARK EAST BLVD, NEW ALBANY, IN 47150  
 PHONE: 812-944-6733 FAX: 812-948-5047  
 e-Mail: info@SAMTEC.com code 53322

DO NOT SCALE DRAWING SHEET SCALE: 2.5:1  
 PLATING:  
 CONTACT AREA: .000010 GOLD OVER .000050 NICKEL  
 REMAINDER: .000200 REF TIN OVER .000050 NICKEL

DESCRIPTION:  
 .5mm DOUBLE ROW SOCKET ASSEMBLY  
 DWG. NO. REF-178708-XX  
 BY: J. BROWNING 09/12/2014 SHEET 1 OF 2

ITEM NO.	PART NUMBER	QUANTITY	MATERIAL
1	BSH-080-01-D-A	1.0000	VECTRA E130i, COLOR: BLACK
2	C-269-11-L	160.00	PHOS BRONZE, 510 SPRING TEMPER
3	<b>K-DOT-.276-.375-.005</b>	1.0000	POLYIMIDE FILM
4	CT-ASP3614MS	.00211	CONDUCTIVE POLYMER
5	TY-ASP210	.01786	ANTI-STATIC BLACK HIPS

(SEE NOTE 9)  
 (SEE NOTE 8)  
 (SEE NOTE 7)

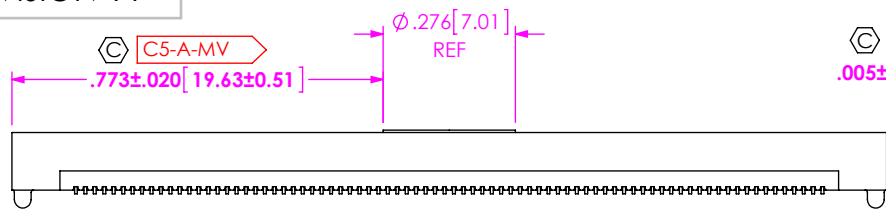
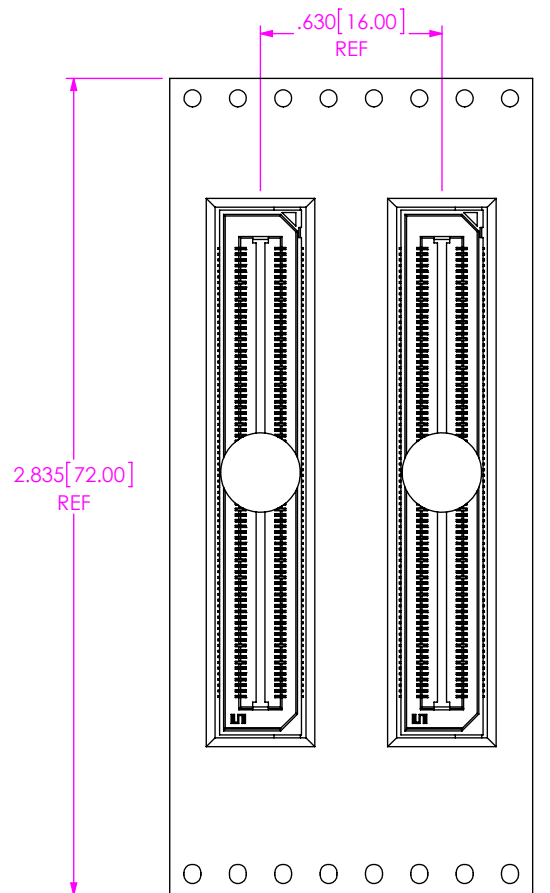
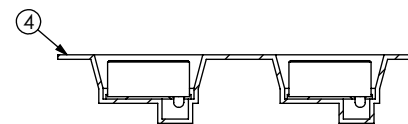


FIG 2  
REF-178708-027-03 SHOWN  
SAME AS FIG 1 EXCEPT AS SHOWN



USER DIRECTION OF UN-REELING →  
POCKET NOT DETAILED



TAPE & REEL VIEW  
(-03 ONLY)

PROPRIETARY NOTE

THIS DOCUMENT CONTAINS INFORMATION CONFIDENTIAL AND PROPRIETARY TO SAMTEC, INC. AND SHALL NOT BE REPRODUCED OR TRANSFERRED TO OTHER DOCUMENTS OR DISCLOSED TO OTHERS OR USED FOR ANY PURPOSE OTHER THAN THAT WHICH IT WAS OBTAINED WITHOUT THE EXPRESSED WRITTEN CONSENT OF SAMTEC, INC.



520 PARK EAST BLVD., NEW ALBANY, IN 47150  
PHONE: 812-944-6733 FAX: 812-948-5047  
e-Mail: info@SAMTEC.com code 55322

SHEET SCALE: 1:2

DESCRIPTION:  
.5mm DOUBLE ROW SOCKET ASSEMBLY

DWG. NO. REF-178708-XX

BY: J. BROWNING 09/12/2014 SHEET 2 OF 2