

# BSP-RTOS-TI-AM57x-PD17.1.x Quickstart

This Quickstart provides you with the know-how to install and work with the RTOS Board Support Package (BSP) for the phyCORE-AM572x Rapid Development Kit (RDK). This Quickstart shows you how to do everything from installing the appropriate tools and source, to creating RTOS projects and debugging them through JTAG. Please refer to the phyCORE-AM572x Hardware Manual for specific information on board-level features such as jumper configuration, memory mapping and pin layout for the phyCORE-AM572x System on Module (SOM) and baseboard. Additionally, gain access to the SOM and baseboard schematics for the phyCORE-AM57x Rapid Development Kit by submitting a Request for Schematic Files from the PHYTEC Service Desk. Sign up or login here: [PHYTEC Support Portal](#).

- 1 [Requirements](#)
  - 1.1 [Hardware](#)
  - 1.2 [Software](#)
- 2 [Development Host Setup](#)
  - 2.1 [Install Host Debian Packages](#)
  - 2.2 [Create an Install Directory](#)
- 3 [Get Started With the Pre-Built RTOS BSP](#)
  - 3.1 [Connector Interfaces](#)
  - 3.2 [Retrieve and Extract the Pre-Built RTOS BSP](#)
  - 3.3 [Install Code Composer Studio](#)
  - 3.4 [Install Code Composer Studio Configuration Files](#)
  - 3.5 [Prepare SD Card for Boot](#)
  - 3.6 [Create a Simple Code Composer Studio Project](#)
  - 3.7 [Build and Debug the Simple Code Composer Studio Project](#)
- 4 [Generate Example Code Composer Studio Projects](#)
  - 4.1 [Generate Example Projects](#)
  - 4.2 [Import and Configure Example Projects](#)
- 5 [Build the RTOS BSP from Source](#)
  - 5.1 [Configure Bash as Default Shell](#)
  - 5.2 [Install Additional Host Debian Packages](#)
  - 5.3 [Install the Linaro Toolchain](#)
  - 5.4 [Install the Repo Tool](#)
  - 5.5 [Git Setup](#)
  - 5.6 [Create a Build Directory](#)
  - 5.7 [Download the BSP Sources](#)
  - 5.8 [Start the Build and Install](#)
- 6 [Rebuild the Platform Development Kit After Modification](#)
- 7 [Additional Documentation](#)

## Requirements

The following system requirements are necessary to successfully complete this Quickstart. Deviations from these requirements may suffice, or may have other workarounds.

### Hardware

- phyCORE-AM572x System on Module (PCM-057)
- phyCORE-AM572x Baseboard (PCM-948)
- Serial cable (RS-232)
- JTAG Emulator (Spectrum Digital XDS200 USB JTAG Emulator is used in this Quickstart)
- AC adapter supplying 12VDC / min. 2A
- 1GB or larger SD Card
- SD card reader operational under Linux
  - If you do not have SD card access under Linux then interacting with the board will only be possible through the JTAG interface.

### Software

- A modern GNU/Linux Operating host system either natively or via a virtual machine:
  - Ubuntu 16.04 LTS recommended, 64-bit required. Other distributions will likely work, please note that some setup information as well as OS-specific commands and paths may differ.
  - If using a virtual machine, VMWare Workstation, VMWare Player, and VirtualBox are all viable solutions.
- Root access to your Linux Host PC. Some commands in the Quickstart will not work if you don't have sudo access (ex. package installation, formatting SD card).
- At least 50GB of free storage space if building BSP from source or 15GB if using pre-built BSP.
- Active Internet connection.

## Development Host Setup

### Install Host Debian Packages

Installing the RTOS BSP requires certain packages to be installed. Run the following command to ensure you have the packages installed:

```
sudo apt-get install libc6:i386 mono-runtime wget
```



Above is the recommended package installation for following this Quickstart on a Ubuntu 16.04 LTS Linux distribution. The names of the packages that provide the required software and libraries may differ in other Linux distributions.

## Create an Install Directory

Run these commands to create a directory which will house your RTOS BSP. In this Quickstart, the PHYTEC base directory is `/opt/PHYTEC_BSPs` and the RTOS BSP directory is `/opt/PHYTEC_BSPs/rtos_ti/install`. This RTOS BSP directory is not a hard requirement, so feel free to modify the following commands to suit your needs.

```
sudo mkdir -p /opt/PHYTEC_BSPs

# In the following command, replace <user> with your host's username
sudo chown -R <user>:<user> /opt/PHYTEC_BSPs

mkdir -p /opt/PHYTEC_BSPs/rtos_ti/install
cd /opt/PHYTEC_BSPs/rtos_ti/install
export RTOS_INSTALL_ROOT=`pwd`
```



`$RTOS_INSTALL_ROOT` is referenced throughout this document. If you use a different directory instead of what is here, be sure to configure this variable accordingly.

## Get Started With the Pre-Built RTOS BSP

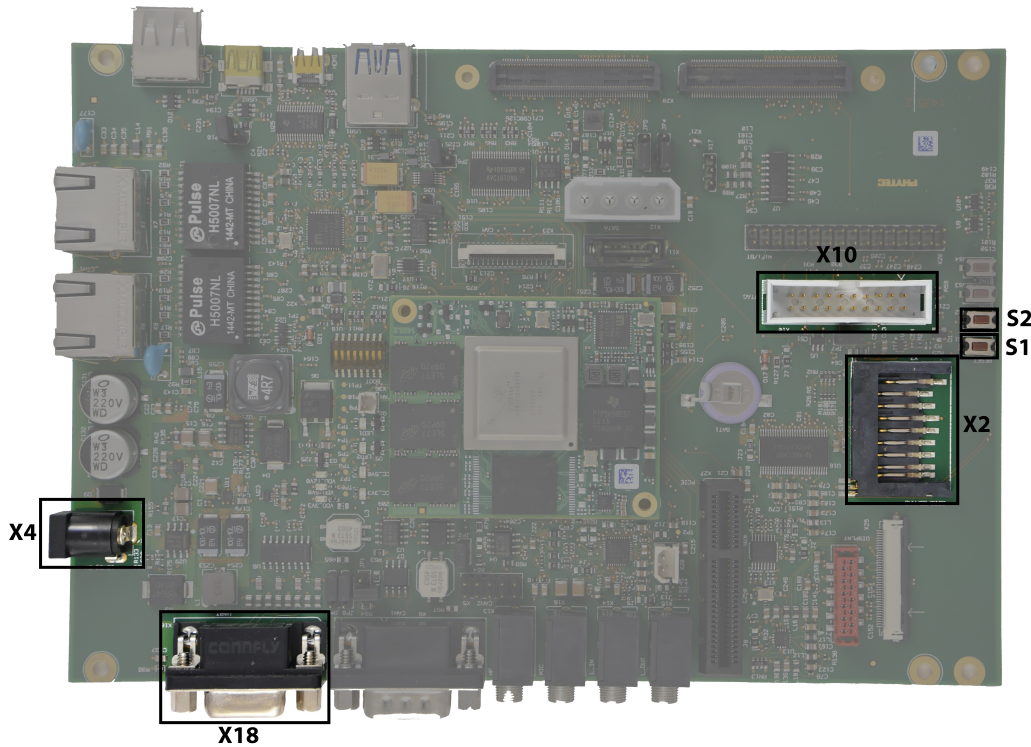
This section is intended to walk you through the steps required to retrieve, extract, and start working with the pre-built RTOS BSP.



If you made it this far without first visiting and following the information provided in the [Requirements](#) and [Development Host Setup](#) sections, please follow those links and return when your configuration meets the requirements and your environment is ready.

## Connector Interfaces

Use the following as a reference for the connector interfaces on the phyCORE-AM572x Rapid Development Kit that will be used in this Quickstart:



X2 - MMC1 (SD/MMC)  
 X4 - 12V Power Input  
 X10 - JTAG (Debug)  
 X18 - UART3 (DB-9)

S1 - Reset Button  
 S2 - Power Button

## Retrieve and Extract the Pre-Built RTOS BSP

Run these commands to download and extract the pre-built RTOS BSP:

```
wget http://artifactory.phytec.com/artifactory/am57xx-images-released-public/BSP-RTOS-TI-AM57x-PD17.1.1.tar.bz2
tar -jxf BSP-RTOS-TI-AM57x-PD17.1.1.tar.bz2 -C $RTOS_INSTALL_ROOT
```

**i** Optional command to free up disk space:

```
rm -f BSP-RTOS-TI-AM57x-PD17.1.1.tar.bz2
```

## Install Code Composer Studio

Code Composer Studio (CCS) is an Eclipse-based integrated development environment (IDE) offered by Texas Instruments for TI embedded processors. The recommended CCS version for this RTOS BSP is 7.2.0. Run these commands to download and install CCS:

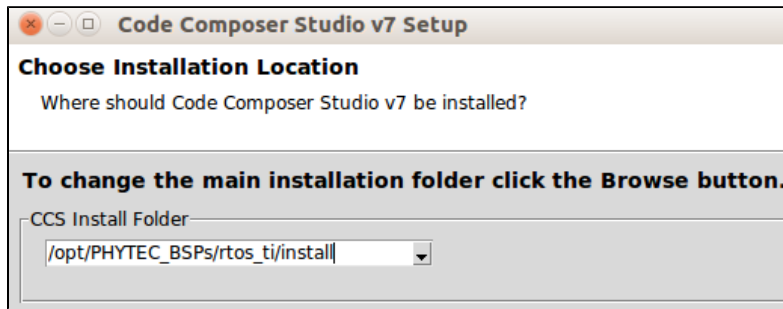
```
cd $RTOS_INSTALL_ROOT
wget http://software-dl.ti.com/ccs/esd/CCSv7/CCS_7_2_0/exports/CCS7.2.0.00013_web_linux-x64.tar.gz
mkdir ccs_temp
tar -xzf CCS7.2.0.00013_web_linux-x64.tar.gz -C ccs_temp
./ccs_temp/ccs_setup_linux64_7.2.0.00013.bin
```

**i** The above CCS installer downloads only selected components during the install. If you would like to frontload the download process, use the following 'wget' command and adjust the above commands to reflect the change in filename:

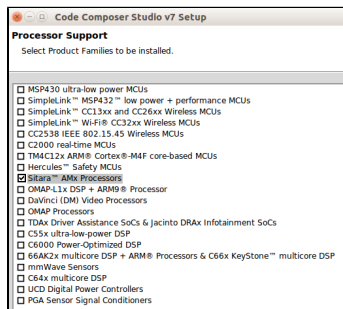
```
wget http://software-dl.ti.com/ccs/esd/CCSv7/CCS_7_2_0/exports/CCS7.2.0.00013_linux-x64.tar.gz
```

Proceed through the CCS installer while following these instructions at the pertinent stages:

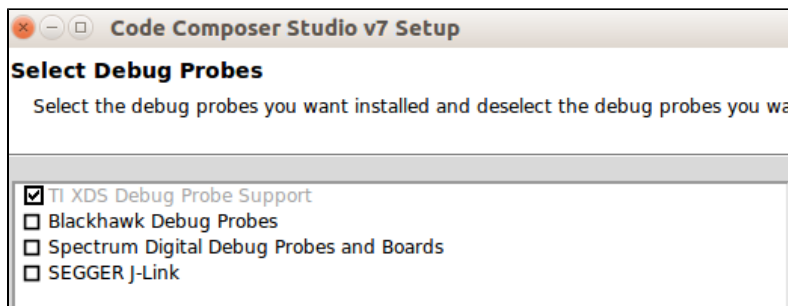
Input `/opt/PHYTEC_BSPs/rtos_ti/install` in Choose Installation Location:



Select *Sitara AMx Processors* in Processor Support:



Select additional JTAG/Debug Probes, if applicable, in Select Debug Probes:



After the install is complete, run the following commands:

```
sudo $RTOS_INSTALL_ROOT/ccsv7/install_scripts/install_drivers.sh
rm -rf ccs_temp/
```



If you installed CCS into a directory other than the one recommended above, you must change the path in the above command to reflect your CCS directory.



Optional command to free up disk space:

```
rm -f CCS7.2.0.00013_web_linux-x64.tar.gz
```

## Install Code Composer Studio Configuration Files

PHYTEC provides files to help ease the CCS configuration process when targeting the phyCORE-AM57x RDK. Run these commands to install these files for use with CCS:



```
cd $RTOS_INSTALL_ROOT/PHYTEC
cp -f am572x_phycore_rdk.xml $RTOS_INSTALL_ROOT/ccsv7/ccs_base/common/targetdb/boards/
cd $RTOS_INSTALL_ROOT/PHYTEC/gel/
cp -rf am572x_phycore_rdk $RTOS_INSTALL_ROOT/ccsv7/ccs_base/emulation/boards/
```



If you installed CCS into a directory other than the one recommended above, you must change the path in the above command to reflect your CCS directory.

## Prepare SD Card for Boot

We recommend that you use an SD card populated with the RTOS BSP secondary bootloader (SBL) so that the phyCORE-AM572x RDK hardware is configured (pinmux, clocks, etc.) by the RTOS board support library.



You can connect to the phyCORE-AM572x in CCS through JTAG after the initial hardware configuration has been handled by another bootloader, like U-Boot, but your hardware and software may behave in unexpected ways.

The RTOS BSP includes a script that will format an SD card and copy the pre-compiled SBL to the formatted SD card. To format and populate an SD card, run these commands:

```
cd $RTOS_INSTALL_ROOT/processor_sdk_rtos_am57xx_4_01_00_06/bin
sudo ./create-sdcard.sh $RTOS_INSTALL_ROOT/pdk_am57xx_1_0_8/packages/ti/boot/sbl/binary/am572x_phycore_rdk/mmcscd/bin
```

After you execute the last command, you will be prompted to select the device number that represents the SD card you would like to format. Please make sure that you select this device number carefully as data on the target device will be destroyed. After the SD card has been formatted and populated, you should insert the SD card into the phyCORE-AM572x carrier board SD card slot and power on the device.



If you would like to add a small suite of interface diagnostic applications to the SD card, run these commands with your formatted SD card mounted on your PC:

```
cd $RTOS_INSTALL_ROOT/pdk_am57xx_1_0_8/packages

# set up the environment for building the diagnostic applications
source pdksetupenv.sh

cd $RTOS_INSTALL_ROOT/pdk_am57xx_1_0_8/packages/ti/board/diag
make am572x_phycore_rdk_sd
cd $RTOS_INSTALL_ROOT/pdk_am57xx_1_0_8/packages/ti/board/bin/am572x_phycore_rdk/sd

# In the following command, replace <user> with your host's username
cp * /media/<user>/boot/
sync
```

## Create a Simple Code Composer Studio Project

You will now create a simple CCS project to test your JTAG connection to the phyCORE-AM572x RDK.

Start CCS by clicking its desktop icon or by running *ccstudio* from the *eclipse* subdirectory of the CCS install directory. After CCS starts, you will be prompted to select a directory as workspace; feel free to select any convenient directory as your workspace. If CCS notifies you that it has detected new products, select and install all of the detected products. These detected products are components of the RTOS BSP that must be installed before they can be used in CCS projects.

Create a new CCS Project: from the drop-down menu, click *File New CCS Project*

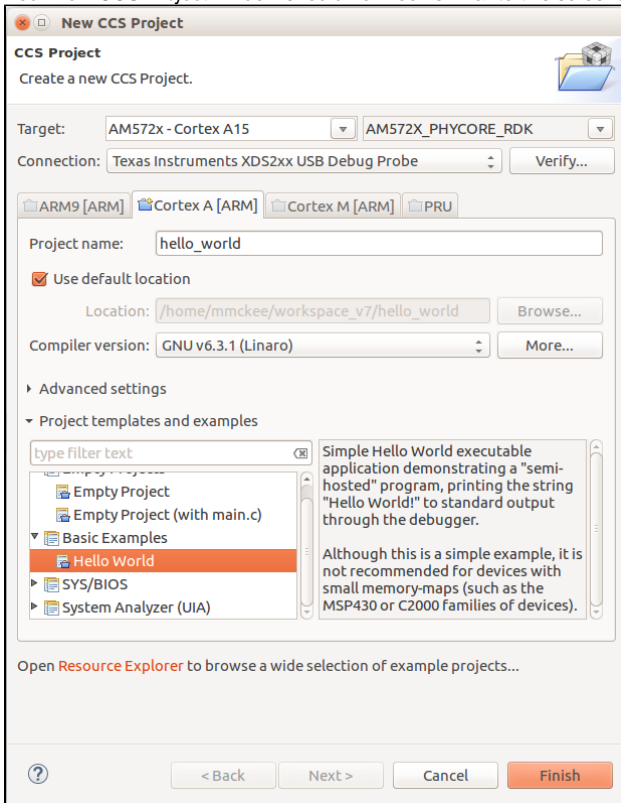
In the *New CCS Project* window:

1. Set *Target* to *AM572x - Cortex A15* and the secondary *Target* field to *AM572X\_PHYCORE\_RDK*.



If `AM572X_PHYCORE_RDK` isn't a selectable option in the secondary *Target* field, it is likely that the `am572x_phycore_rdk.xml` file was not correctly installed in the [Install CCS Configuration Files](#) step. Please review this step and try again after restarting CCS.

2. Set *Connection* to *Texas Instruments XDS2xx USB Debug Probe*.
  3. Click the *Cortex A [ARM]* tab and set your project name to *hello\_world*.
  4. Under *Advanced Settings*, set *Linker command file* to *AM572x.ld*.
  5. Under *Project templates and examples*, select *Hello World* from the *Basic Examples* section.
- Your *New CCS Project* window should now look similar to this screenshot:



6. Click *Finish*.

## Build and Debug the Simple Code Composer Studio Project

Building and debugging this simple CCS project is a relatively easy process. Follow these steps to ensure your build environment is set up correctly and that you are able to debug your project through the JTAG interface.

Open the *Project Explorer* window: from the drop-down menu, click *View Project Explorer*

In the *Project Explorer* window:

1. Ensure that you have a target configuration file in your project set to Active/Default. If you followed the steps in the [Create a Simple Code Composer Studio Project](#) section, this file (`AM572X_PHYCORE_RDK.ccxml` by default) and setting will be created for you.

To create a target configuration file manually, right click the *hello\_world* project name in the *Project Explorer* window and click *New Target Configuration File*. Select `AM572X_PHYCORE_RDK` in the *Board or Device* list and click *Save under Save Configuration*.



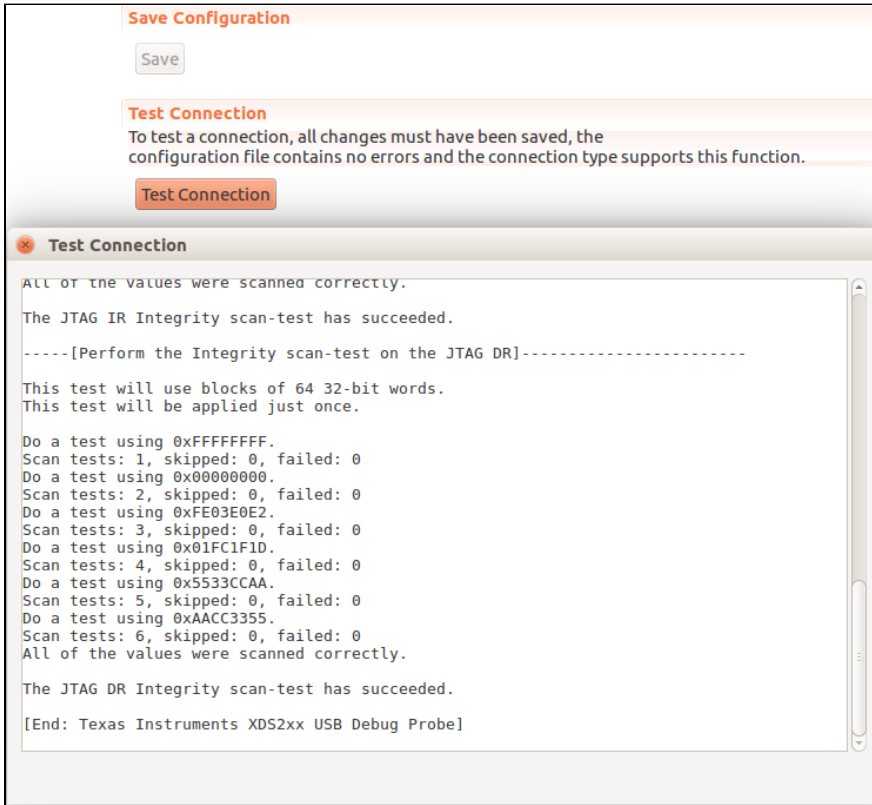
Due to a bug in the Sitara Device Support package installed with the recommended version of CCS, you will likely need to modify the target configuration file before your project will build. To do so, open the target configuration file (`AM572X_PHYCORE_RDK.ccxml` by default) from your *Project Explorer* window. Click the *Advanced* tab at the bottom of the *Target Configuration* window. Note that the third and fourth *ICECrusherCS* entries have duplicate names. Rename the third *ICECrusherCS* entry to `ICECrusherCS_2` and the fourth *ICECrusherCS* entry to `ICECrusherCS_3` and save the target configuration.

2. Open your project's target configuration file from the *Project Explorer* window.

In the target configuration file window:

1. Under the *General Setup* field, select your JTAG device in the *Connection* drop-down. For the Spectrum Digital XDS200 USB JTAG Emulator, the correct option is *Texas Instruments XDS2xx USB Debug Probe*.
2. Save the target configuration file by clicking *Save* in the *Save Configuration* field. You must save the target configuration file before testing the JTAG connection in the following step.

- Make sure that your board is powered on and that you have connected your JTAG device to the JTAG pins on the phyCORE-AM572x RDK carrier board. Click *Test Connection* in the *Test Connection* field. If you have configured your device and project correctly, you should see a result similar to this screenshot:



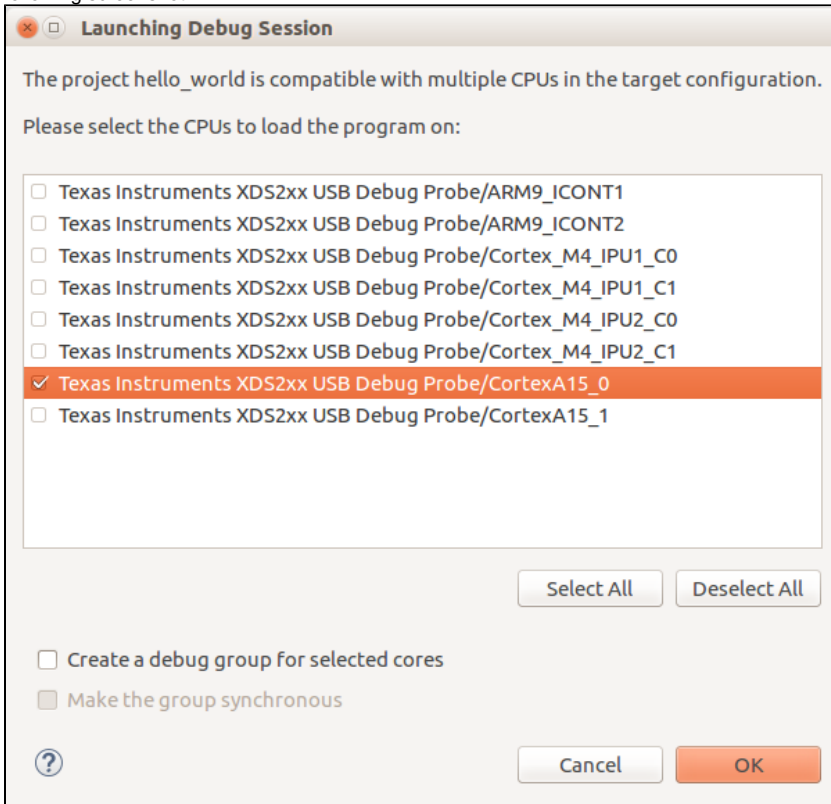
In the *Project Explorer* window:

- Set your target configuration file to be the active and default target configuration by right clicking the target configuration file in the *Project Explorer* window and selecting *Set as Active Target Configuration* as well as *Set as Default Target Configuration*.
- Right click your *hello\_world* project and select *Build Project*.
- After the project is done building, right click your *hello\_world* project and select *Debug As Code Composer Debug Session*.

In the *Launching Debug Session* window:

- Click *Deselect All*.

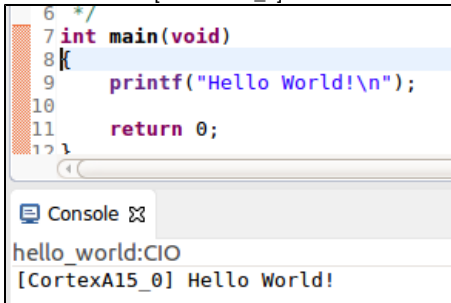
2. Select *Texas Instruments XDS2xx USB Debug Probe/CortexA15\_0*. Your *Launching Debug Session* window should now look similar to the following screenshot:



3. Click OK. CCS will now automatically connect to the first core of the ARM Cortex-A15 processor on the phyCORE-AM572x RDK through the JTAG port, configure the hardware using the GEL files, load the *hello\_world* program into memory, and run the *hello\_world* program from memory.

In the main CCS window:

1. If all of the previous steps have been followed correctly, the *hello\_world* program will be paused at an automatically generated breakpoint at line 7 of *hello.c*. Click the *Resume* button located in the top toolbar.
2. You should see "[CortexA15\_0] Hello World!" in the *Console* window just like this screenshot:



## Generate Example Code Composer Studio Projects

Included with this RTOS BSP is a number of configuration files that can be used to generate importable CCS projects for reference and interface testing. This section will explain how to generate and import these CCS projects.

### Generate Example Projects

The Platform Development Kit (PDK) provides a script to search through the PDK and generate importable CCS projects if it finds configuration files that match the arguments given to the script. Run these commands to generate these projects:

```
cd $RTOS_INSTALL_ROOT/pdk_am57xx_1_0_8/packages

# set up the environment for searching through the PDK and generating the projects
source pdksetupenv.sh

./pdkProjectCreate.sh AM572x am572x_phycore_rdk little all all arm
```



The above command looks for projects that use the AM572x SOC, the am572x\_phycore\_rdk board, little Endian byte sequencing, all PDK submodules, all project types, and the Cortex-A15 processor. If you would like to look for projects that target the C66x DSP, change *arm* to *dsp*. For the Cortex-M4 processor, change *arm* to *m4*. Note that the offered example projects will depend on release and testing.

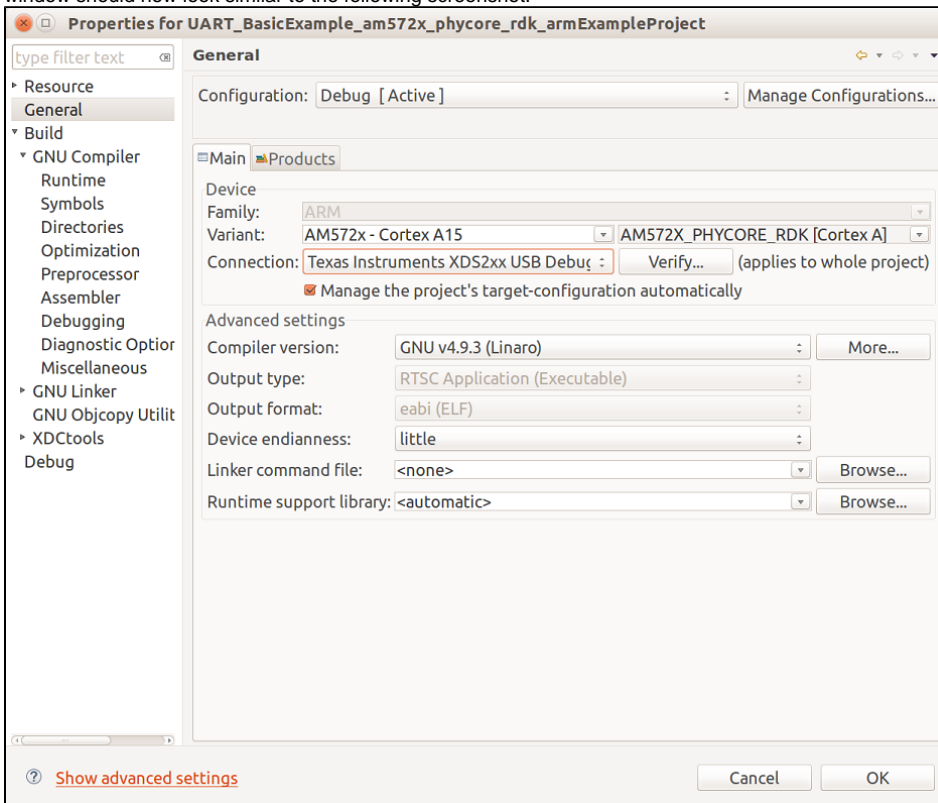
Within your current directory you should now have a new subdirectory called *MyExampleProjects* that contains an additional subdirectory for each found configuration file that matches the arguments given to the *pdkProjectCreate.sh* script.

## Import and Configure Example Projects

To import the example projects, start by opening CCS.

In the main CCS window:

1. From the drop-down menu, click *File Import...*
2. In the *Import* window, expand *Code Composer Studio* and select *CCS Projects*, and click *Next*.
3. In the *Import CCS Eclipse Projects* window, click the *Select search-directory* radial button and click *Browse* next to the *Select search-directory* field. Navigate to the *\$RTOS\_INSTALL\_ROOT/pdk\_am57xx\_1\_0\_8/packages/MyExampleProjects* directory and select the directory that contains the project that you would like to import. Click *OK*.
4. The imported project should now be present in the *Project Explorer* window. Right click the imported project in the *Project Explorer* window and select *Properties*.
5. In the *General* section of the *Properties* window, open the *Main* tab and select *AM572x - Cortex A15* in the first *Variant* drop-down menu and *AM572X\_PHYCORE\_RDK [Cortex A]* in the second *Variant* drop-down menu.
6. In the same section as step five, select *Texas Instruments XDS2xx USB Debug* in the *Connection* drop-down menu. Your project *Properties* window should now look similar to the following screenshot:



7. Click *OK*.

Your imported project should now be ready to build and debug.

## Build the RTOS BSP from Source

This section will explain how to download and build from the RTOS BSP sources. Please note that this is not a required procedure but the steps and scripts to build the BSP from source are offered here for reference.



If you made it this far without first visiting and following the information provided in the [Requirements](#) and [Development Host Setup](#) sections, please follow those links and return when your configuration meets the requirements and your environment is ready.

## Configure Bash as Default Shell

By default, Ubuntu 16.04 uses the Debian Almquist Shell (dash) for calls to the Bourne Shell (sh). This will cause issues in building certain RTOS BSP components as some of Dash's built-in commands do not support all of the required options. To ensure your system uses Bash over Dash for calls to `/bin/sh`, run this command:

```
sudo dpkg-reconfigure dash
```

Select <No> when prompted to use dash as the default system shell (`/bin/sh`).

## Install Additional Host Debian Packages

Building the RTOS BSP from source requires additional packages to be installed. Run the following command to ensure you have the packages installed:

```
sudo apt-get install build-essential cmake curl doxygen git libboost-dev libloki-dev libtinfo-dev unzip
```



The above is the recommended package installation for development on a Ubuntu 16.04 LTS Linux distribution. The names of the packages that provide the required software and libraries may differ in other Linux distributions. Also note that these packages are required in addition to those listed in the [Install Host Debian Packages](#) section.

## Install the Linaro Toolchain

Run the following commands to install the Linaro Toolchain:

```
wget https://releases.linaro.org/components/toolchain/binaries/5.3-2016.02/arm-linux-gnueabi/gcc-linaro-5.3-2016.02-x86_64_arm-linux-gnueabi.tar.xz
tar -Jxvf gcc-linaro-5.3-2016.02-x86_64_arm-linux-gnueabi.tar.xz -C /opt/PHYTEC_BSPs
rm gcc-linaro-5.3-2016.02-x86_64_arm-linux-gnueabi.tar.xz
```

After extracting the toolchain, it needs to be added to the host's *PATH* to properly use it for building:

```
export PATH=/opt/PHYTEC_BSPs/gcc-linaro-5.3-2016.02-x86_64_arm-linux-gnueabi/bin:$PATH
```



To make this change last beyond your current terminal session, use a text editor to modify your `~/.bashrc` file and add the above command to the end of the file.

## Install the Repo Tool

The *repo* tool is used to obtain RTOS BSP sources from Git. Run the following commands to install the *repo* tool:

```
sudo mkdir -p /opt/bin

# In the following command, replace <user> with your host's username
sudo chown -R <user>:~ /opt/bin

curl http://commondatastorage.googleapis.com/git-repo-downloads/repo > /opt/bin/repo
chmod a+x /opt/bin/repo
```

After installing the *repo* tool, it needs to be added to the host's *PATH* to use it for downloading sources:

```
export PATH=/opt/bin:$PATH
```



To make this change last beyond your current terminal session, use a text editor to modify your `~/.bashrc` file and add the above command to the end of the file.

## Git Setup

If you have not yet configured your Git environment on this machine, please run the following commands to set your user name and email address. See [her](#) for more information on getting started with Git.

```
git config --global user.email "your@email.com"
git config --global user.name "Your Name"
git config --global http.sslcainfo /etc/ssl/certs/ca-certificates.crt
```

## Create a Build Directory

A separate directory from the standard install directory is required to build the RTOS BSP from source. Run these commands:

```
mkdir -p /opt/PHYTEC_BSPs/rtos_ti/build
cd /opt/PHYTEC_BSPs/rtos_ti/build
export RTOS_BUILD_ROOT=`pwd`
```



**\$RTOS\_BUILD\_ROOT** is referenced throughout this section. If you use a different directory instead of what is here, be sure to configure this variable accordingly.

## Download the BSP Sources

Download the manifest file for the AM57x RTOS PD17.1.x BSP:

```
cd $RTOS_BUILD_ROOT
repo init -u https://stash.phytec.com/scm/tirtos/manifests-phytec.git -b am57x -m BSP-RTOS-TI-AM57x-PD17.1.1.xml
```

Download the RTOS BSP sources specified in the manifest file:

```
repo sync
```

## Start the Build and Install

The RTOS build and install script will download and install components not offered through Git as well as build and install components sourced through the above manifest. Run the following commands to start the build:

```
cd $RTOS_BUILD_ROOT
./rtos-build-install.sh
```



By default, the RTOS build and install script will place the built RTOS BSP into `/opt/PHYTEC_BSPs/rtos_ti/install`. If you would like to place the RTOS BSP elsewhere, export `SDK_INSTALL_PATH` to your desired absolute path before running the build and install script. Make sure that the path you choose exists and that your user has read and write permissions for that path.

## Rebuild the Platform Development Kit After Modification

The Platform Development Kit (PDK) contains the majority of the board and hardware-specific drivers and libraries and, when modified, will need to be rebuilt before use. This section will explain how to rebuild the PDK component of the RTOS BSP.



The phyCORE-AM572x RDK board support library source files are located at `$RTOS_INSTALL_ROOT/pdk_am57xx_1_0_8/packages/ti/board/src/am572x_phycore_rdk`. This is likely the best place to start when modifying the board support library to suit your needs. Two other locations look into are the chip-support library at `$RTOS_INSTALL_ROOT/pdk_am57xx_1_0_8/packages/ti/csl` and the drivers at `$RTOS_INSTALL_ROOT/pdk_am57xx_1_0_8/packages/ti/drv`.

Run the following commands to clean and build the entirety of the PDK:

```
cd $RTOS_INSTALL_ROOT/pdk_am57xx_1_0_8/packages

# set up the environment for building the PDK
source pdksetupenv.sh

make clean
make all
```





You can also clean and make individual components of the PDK from the above directory. The following make targets are supported by the included makefile: *cs1 profiling board emac fatfs gpio i2c mcasp mmcsd nimu osal pm spi uart icss-emac nimu-icss pcie sbl usb vps pruss*. To clean one of the listed, append *\_clean* to the end of the target component that you want to clean when running *make*.

## Additional Documentation

---

Texas Instruments offers documentation that can be used as reference or for guidance in effectively using the RTOS BSP:

[Texas Instruments Processor SDK RTOS Software Developer Guide](#)

[Texas Instruments Processor SDK RTOS Getting Started Guide](#)